

- NOTES:
- 1. ALL WIRES TO BE xxxV, xx*, xxx.
 - 2. OBSERVE DIRTY/CLEAN WIRING PRACTICES.
 - 3. Dx/Cx MARKERS INDICATE POTENTIAL ROUTING WIRING.
 - 4. ALL WIRES ARE #xx AWG, UNLESS OTHERWISE NOTED.
 - 5. ALL WIRES ARE xxx, UNLESS OTHERWISE NOTED.
 - 6. ALL GROUND WIRES ARE #xx AWG xxx, UNLESS OTHERWISE NOTED.

NOTE: K6K/K2K BAUD RATE SWITCHES

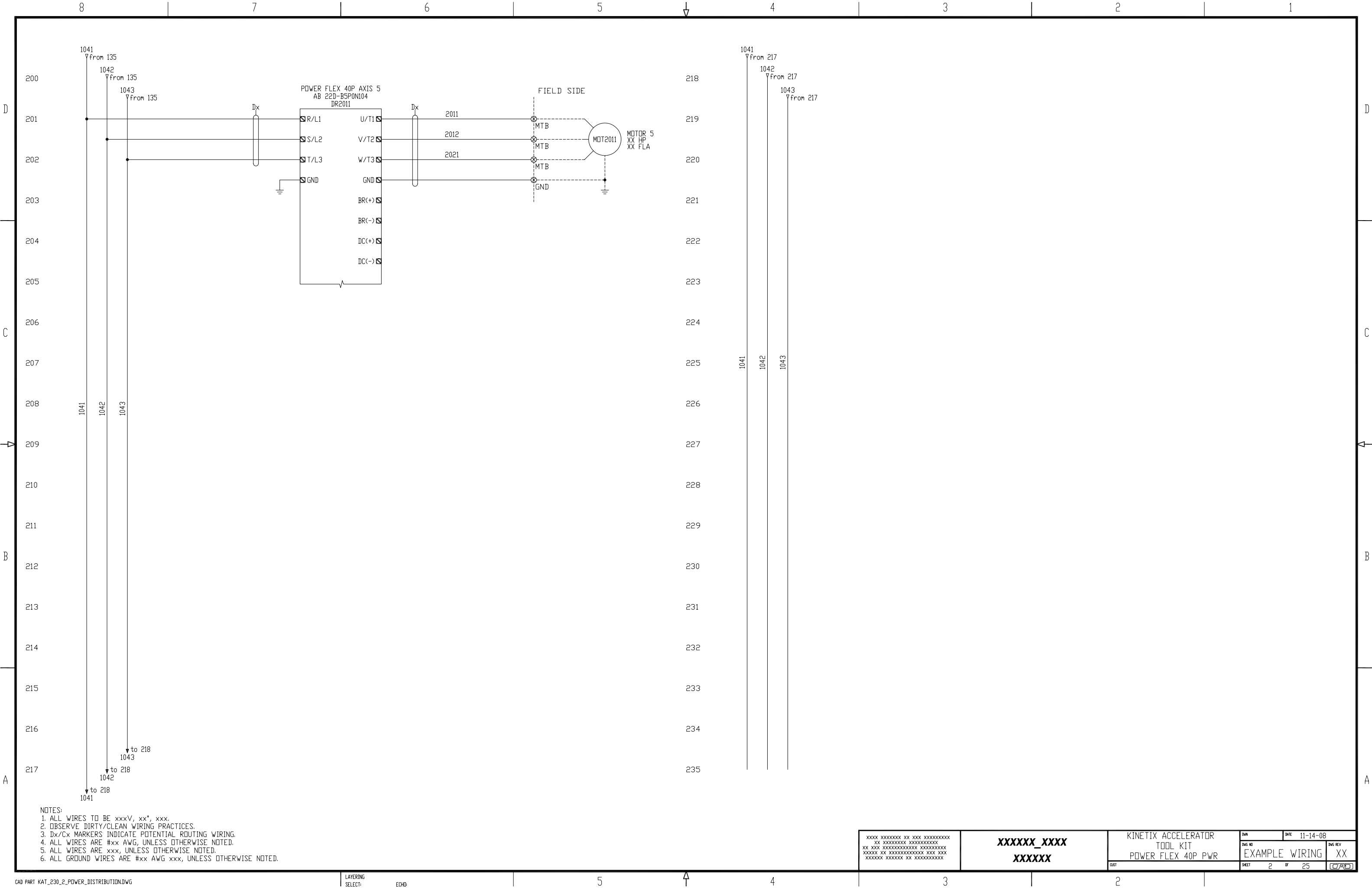
OPTICAL POWER		BAUD RATE	
SW1		SW2	SW3
OFF	LO	ON	OFF
ON	HI	OFF	ON

XXXX XXXXXXXX	XX XXX XXXXXXXX
XX XXX XXXXXXXX	XXXX XXXXXXXX
XXXX XXX XXXXXXXX	XXXX XXX XXXXXXXX
XXXX XXX XXXXXXXX	XXXX XXX XXXXXXXX

XXXXXX_XXXX
XXXXXX

KINETIX ACCELERATOR
TOOL KIT
KINETIX DRIVE POWER

DWG NO	DATE	DWG REV
EXAMPLE WIRING	11-14-08	XX
SHEET	1 OF 25	CPD



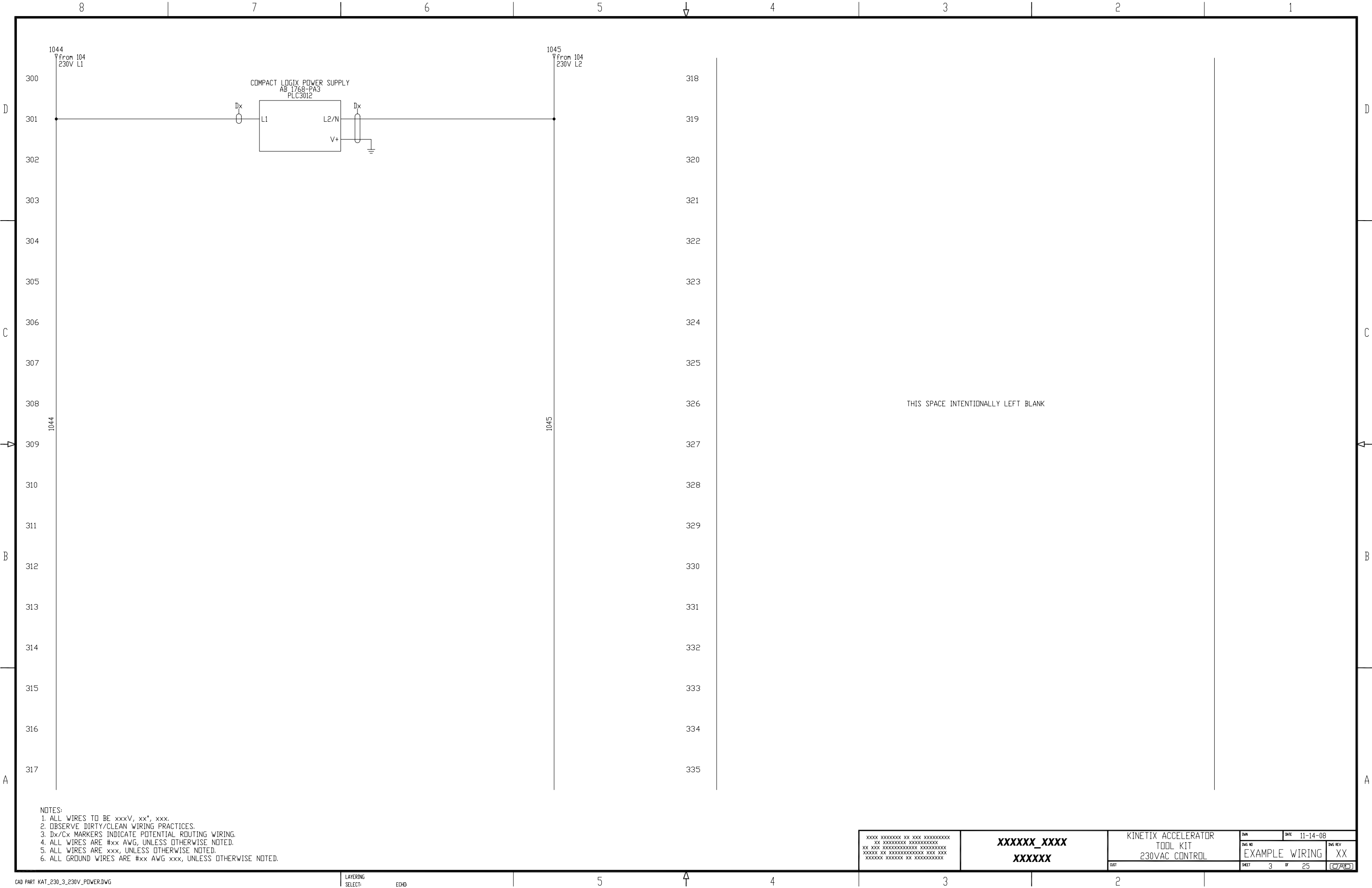
NOTES:
1. ALL WIRES TO BE xxxV, xx*, xxx.
2. OBSERVE DIRTY/CLEAN WIRING PRACTICES.
3. Dx/Cx MARKERS INDICATE POTENTIAL ROUTING WIRING.
4. ALL WIRES ARE #xx AWG, UNLESS OTHERWISE NOTED.
5. ALL WIRES ARE xxx, UNLESS OTHERWISE NOTED.
6. ALL GROUND WIRES ARE #xx AWG xxx, UNLESS OTHERWISE NOTED.

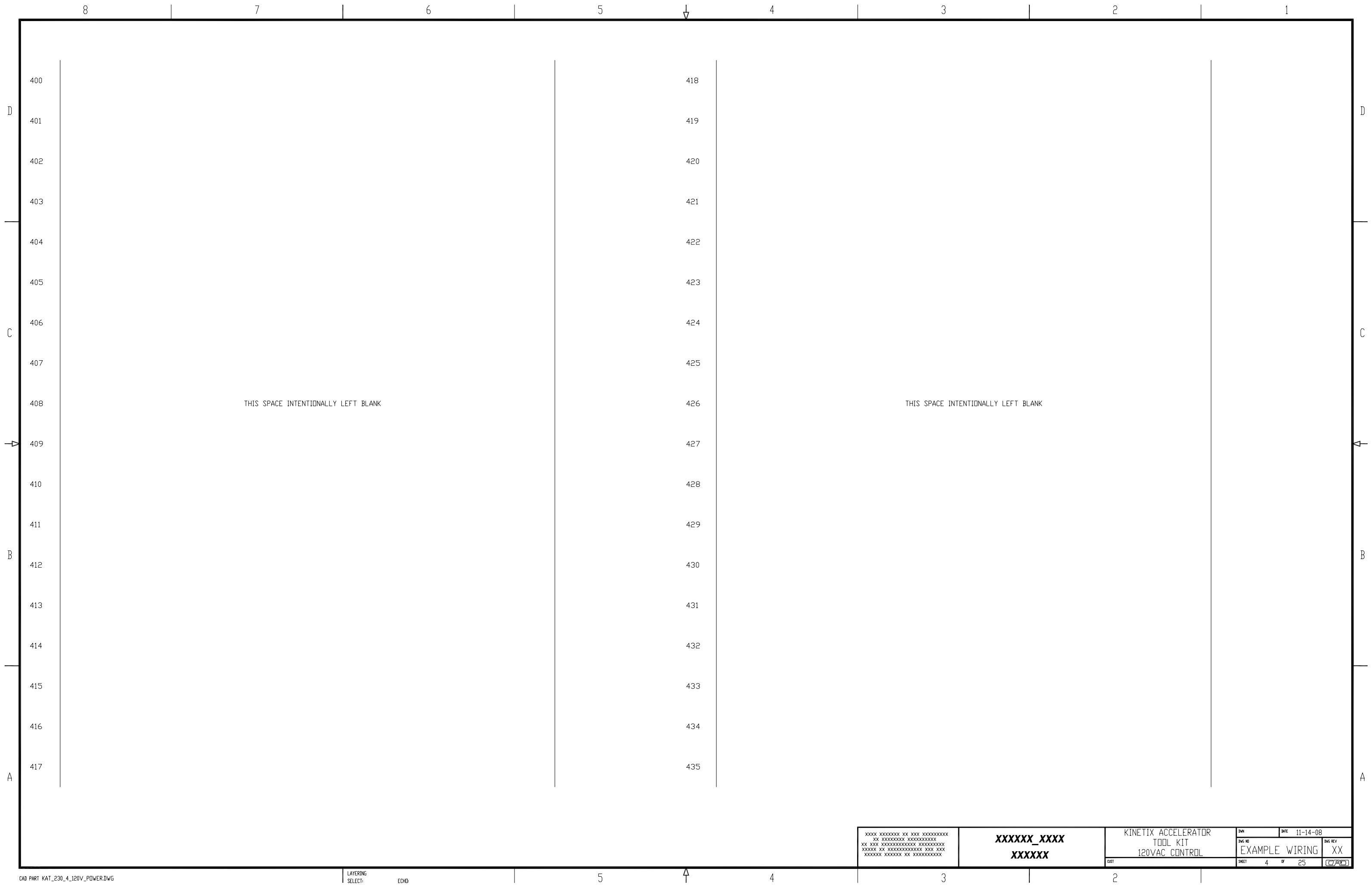
XXXX XXXXXXXX XX XXX XXXXXXXXXX
XX XXXXXXXXXX XXXXXXXXXX
XX XXX XXXXXXXXXX XXXXXXXXXX
XXXXXX XX XXXXXXXXXX XXX XXX
XXXXXX XXXXXXXX XX XXXXXXXXXX

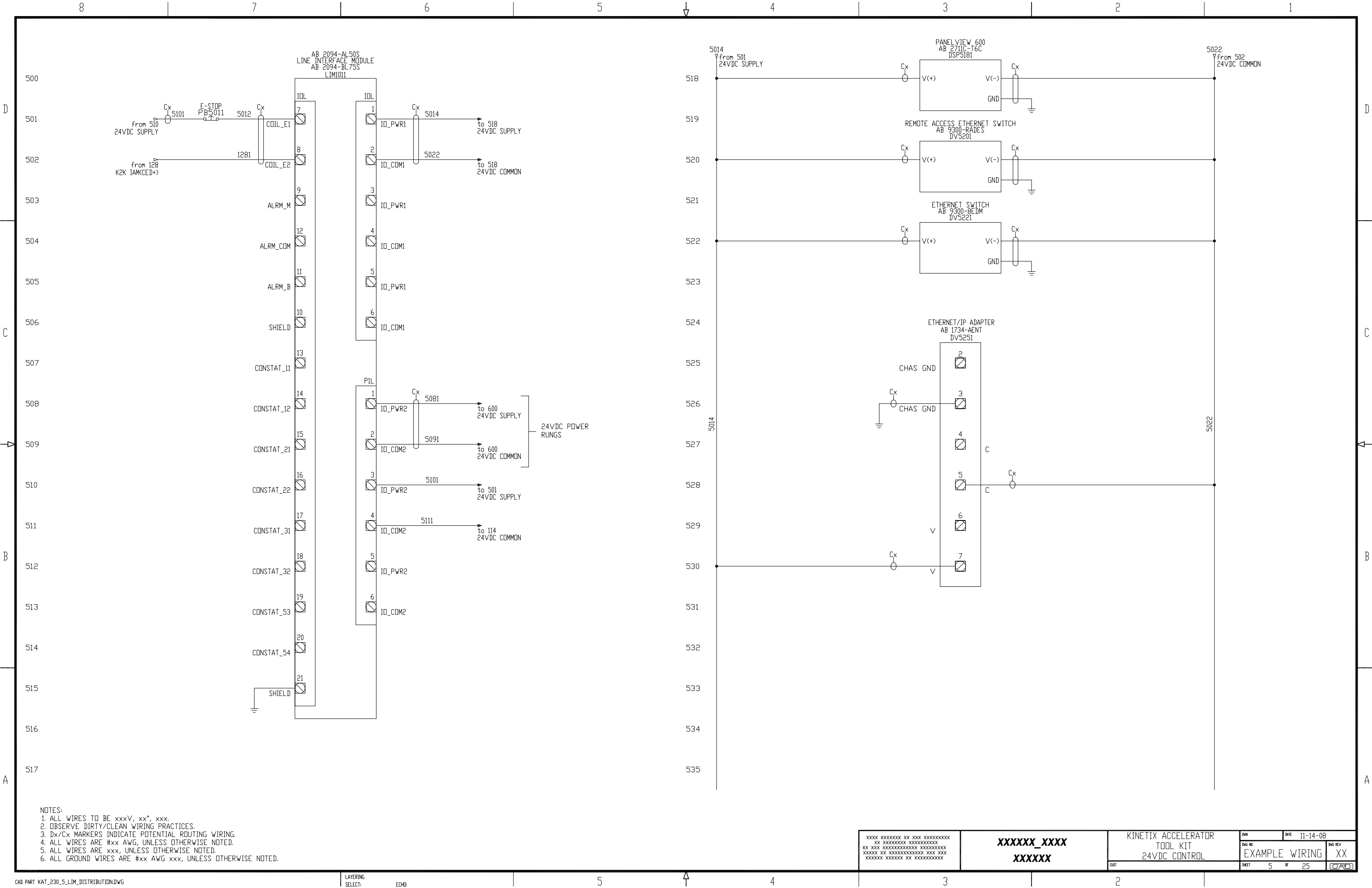
XXXXXX_XXXX
XXXXXX

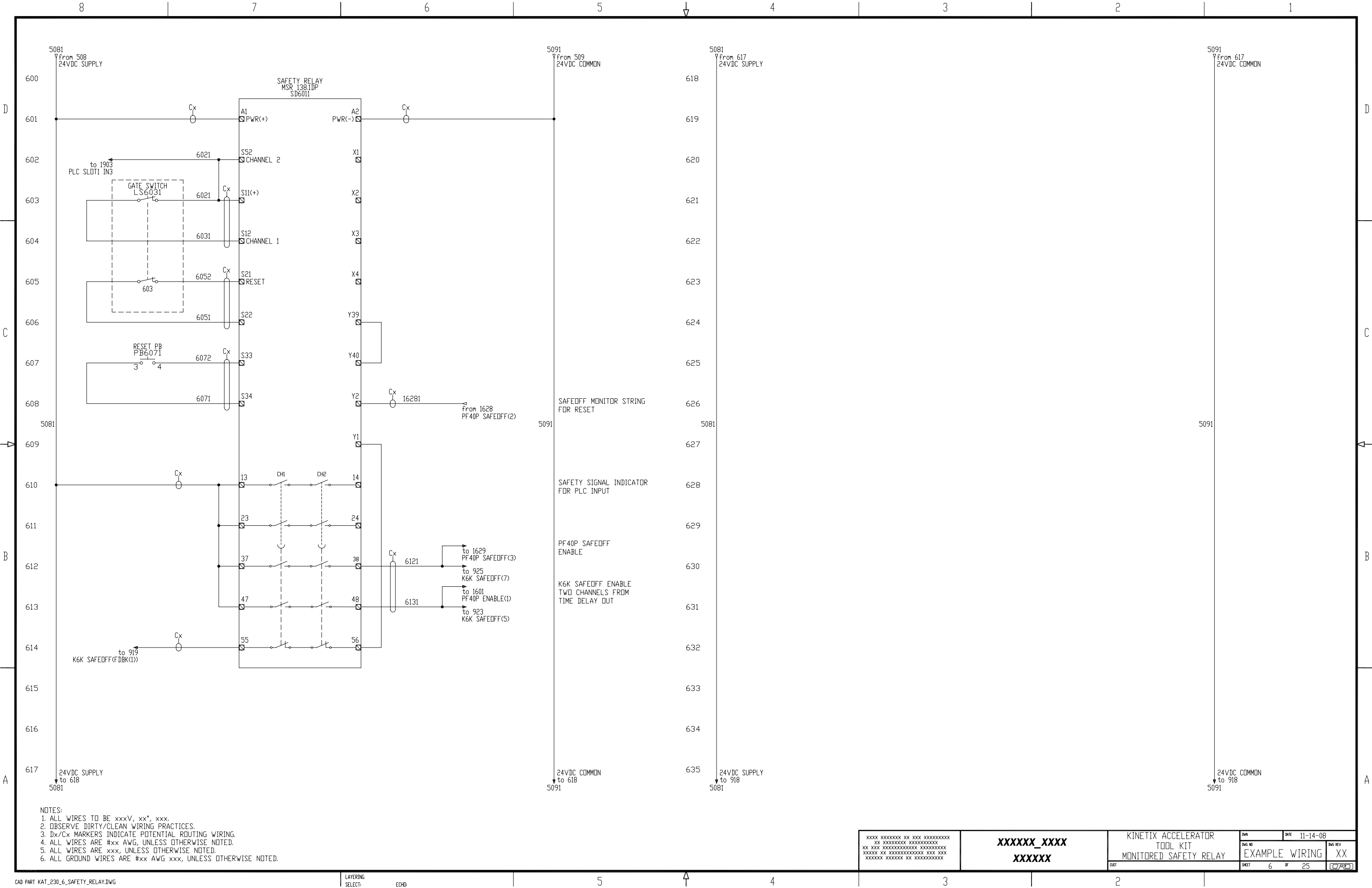
KINETIX ACCELERATOR
TOOL KIT
POWER FLEX 40P PWR

DWG ID	DATE	11-14-08
EXAMPLE WIRING	DWG REV	XX
SHEET	2	OF 25









NOTES:
1. ALL WIRES TO BE xxxV, xx*, xxx.
2. OBSERVE DIRTY/CLEAN WIRING PRACTICES.
3. Dx/Cx MARKERS INDICATE POTENTIAL ROUTING WIRING.
4. ALL WIRES ARE #xx AWG, UNLESS OTHERWISE NOTED.
5. ALL WIRES ARE xxx, UNLESS OTHERWISE NOTED.
6. ALL GROUND WIRES ARE #xx AWG xxx, UNLESS OTHERWISE NOTED.

XXXX XXXXXXXX XX XXX XXXXXXXXXX
XX XXXXXXXXXXXX XXXXXXXXXXXX
XXXXXX XX XXXXXXXXXXXX XXX XXX
XXXXXXXX XXXXXX XX XXXXXXXXXXXX

XXXXXX_XXXX
XXXXXX

KINETIX ACCELERATOR
TOOL KIT
MONITORED SAFETY RELAY

REV	DATE	11-14-08
FIG NO	EXAMPLE WIRING	XX
SHEET	6	OF 25

8 7 6 5 4 3 2 1

D

700

701

702

703

704

705

706

707

708

709

710

711

712

713

714

715

716

717

C

B

A

THIS SPACE INTENTIONALLY LEFT BLANK

718

719

720

721

722

723

724

725

726

727

728

729

730

731

732

733

734

735

THIS SPACE INTENTIONALLY LEFT BLANK

XXXX XXXXXX XX XX XXXXXXXXXXXX
XX XXXXXXXXXXXX XXXXXXXXXXXX
XX XX XXXXXXXXXXXX XXXXXXXXXXXX
XXXXX XX XXXXXXXXXXXX XX XX
XXXXXX XXXXXX XX XXXXXXXXXXXX

XXXXXX_XXXX
XXXXXX

KINETIX ACCELERATOR
TOOL KIT
24VDC CONTROL AUX

DWG ID DATE 11-14-08
EXAMPLE WIRING XX
SHEET 7 OF 25

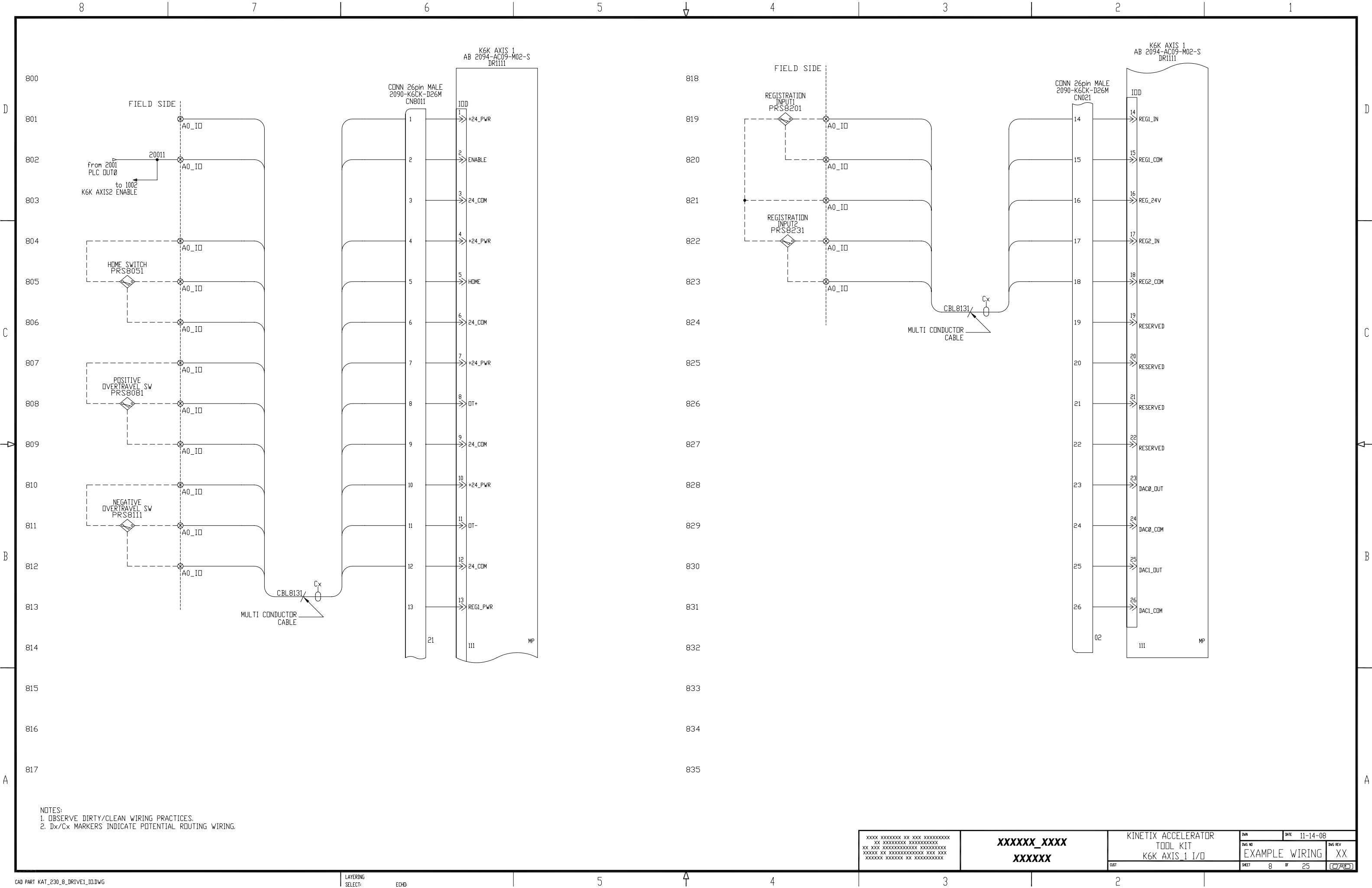
CAD PART KAT_230_7_24V_CONTROL_POWER.DWG

LAYERING
SELECT:

ECHD:

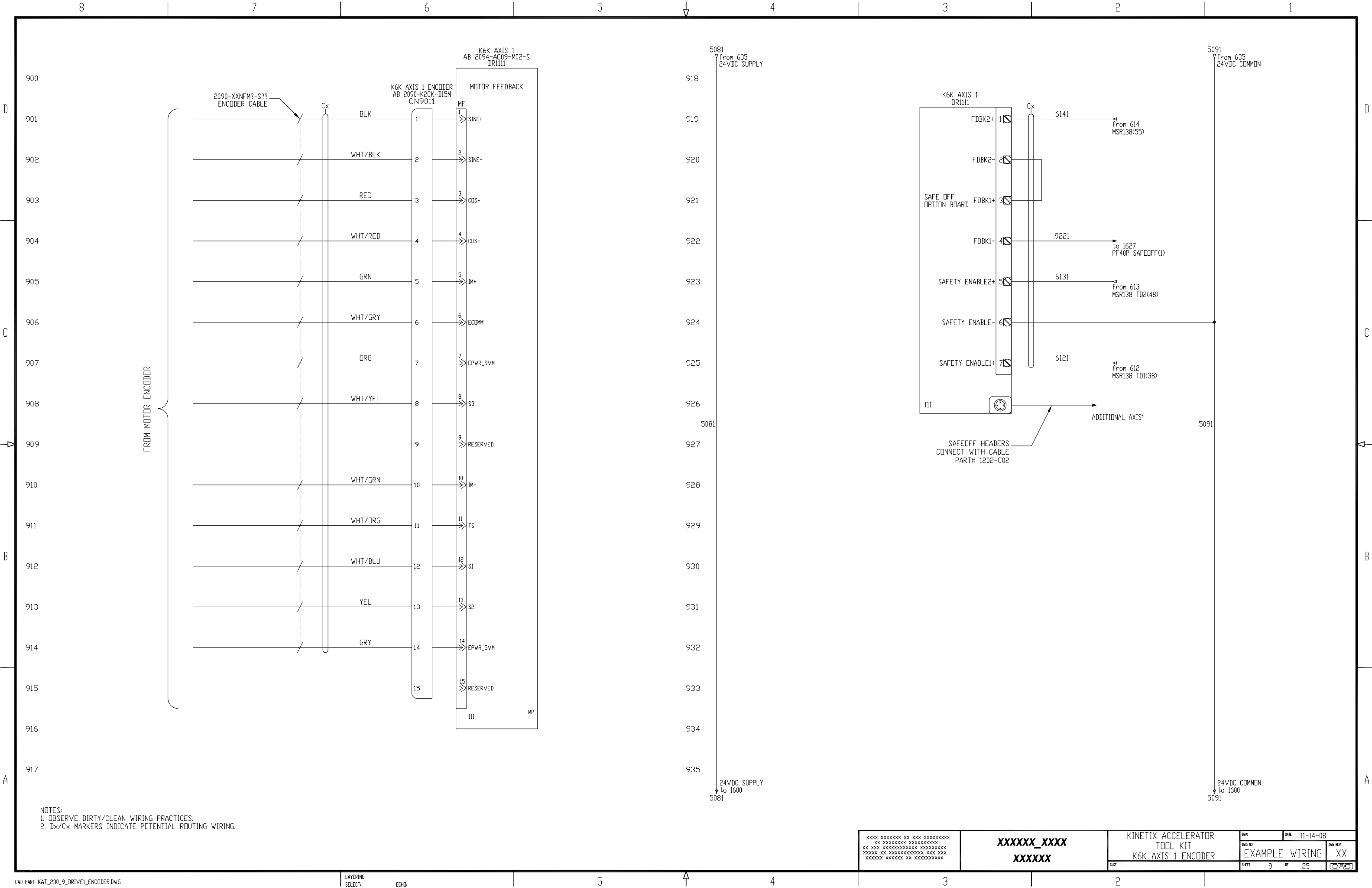
5 4 3 2 1

A



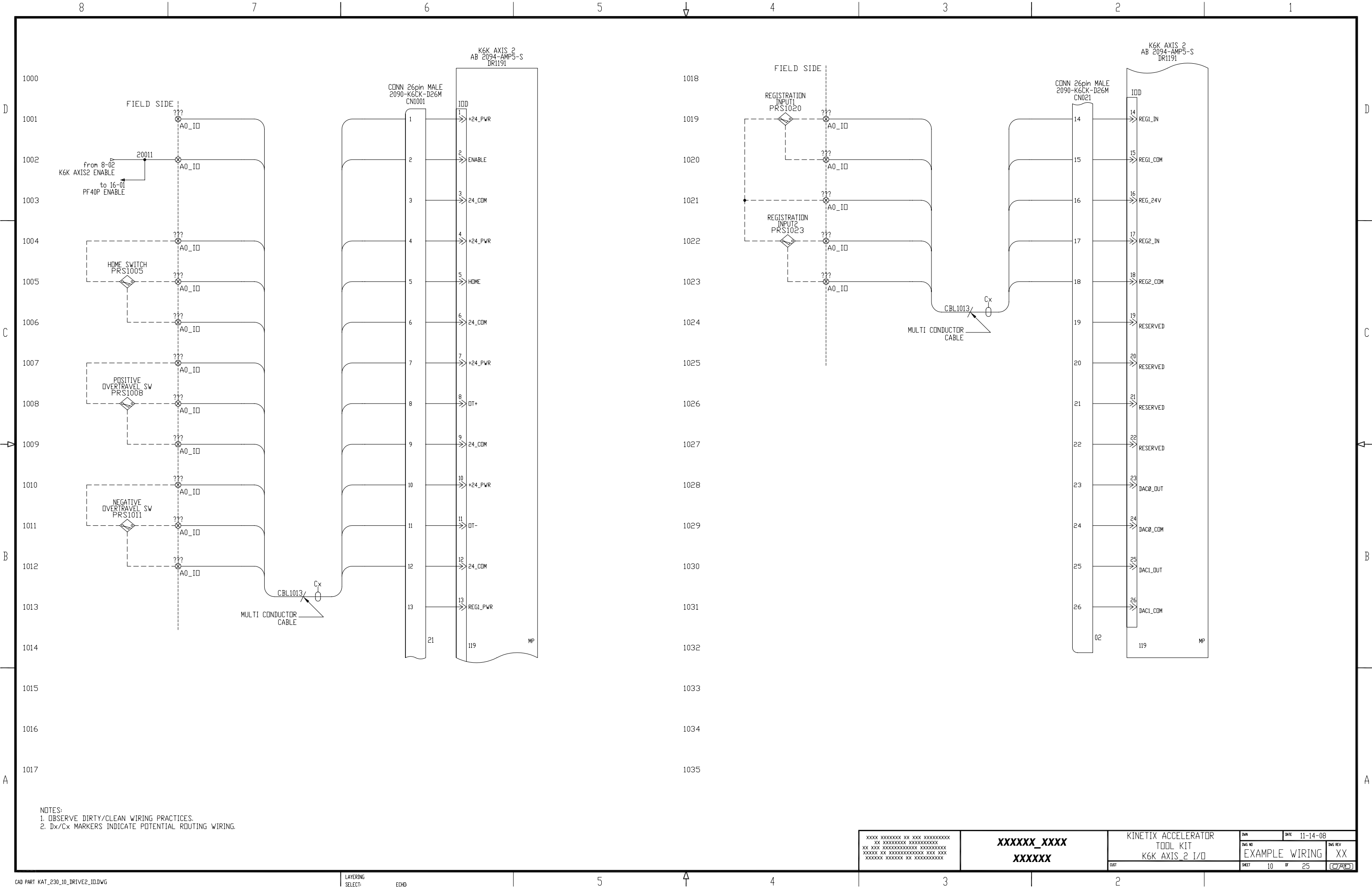
NOTES:
1. OBSERVE DIRTY/CLEAN WIRING PRACTICES.
2. Dx/Cx MARKERS INDICATE POTENTIAL ROUTING WIRING.

XXXX XXXXXXXX XX XXX XXXXXXXXXX XX XXXXXXXXXXXX XXXXXXXXXXXX XXXXXX XX XXXXXXXXXXXXXXX XXX XXX XXXXXXXX XXXXXX XX XXXXXXXXXXXX		XXXXXX_XXXX XXXXXX		KINETIX ACCELERATOR TOOL KIT K6K AXIS_1 I/O		DWG NO EXAMPLE WIRING	DATE 11-14-08	DWG REV XX
CUST		SHEET 8		OF 25		CAD		



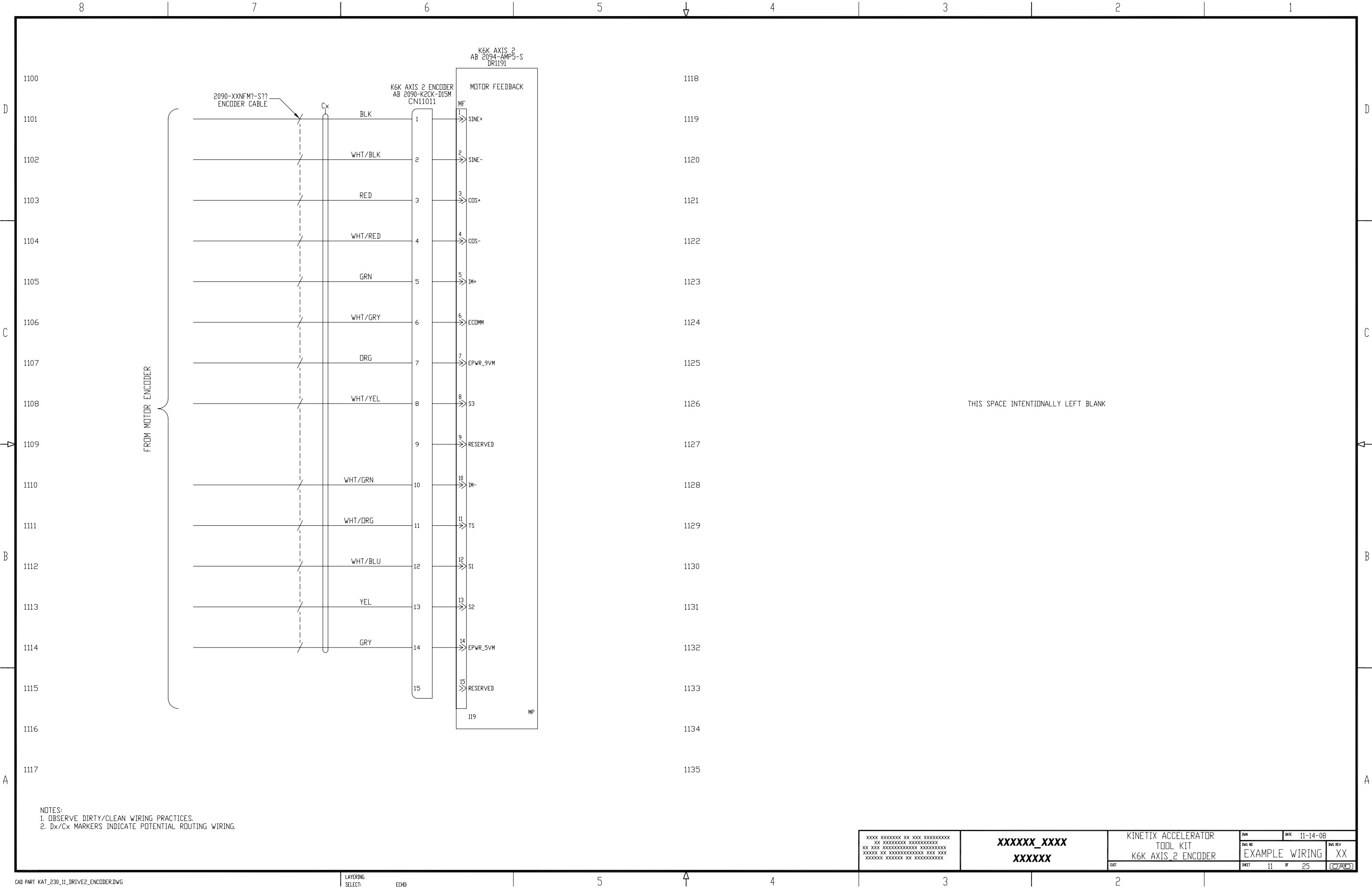
NOTES:
1. OBSERVE DIRTY/CLEAN WIRING PRACTICES.
2. Dx/Cx MARKERS INDICATE POTENTIAL ROUTING WIRING.

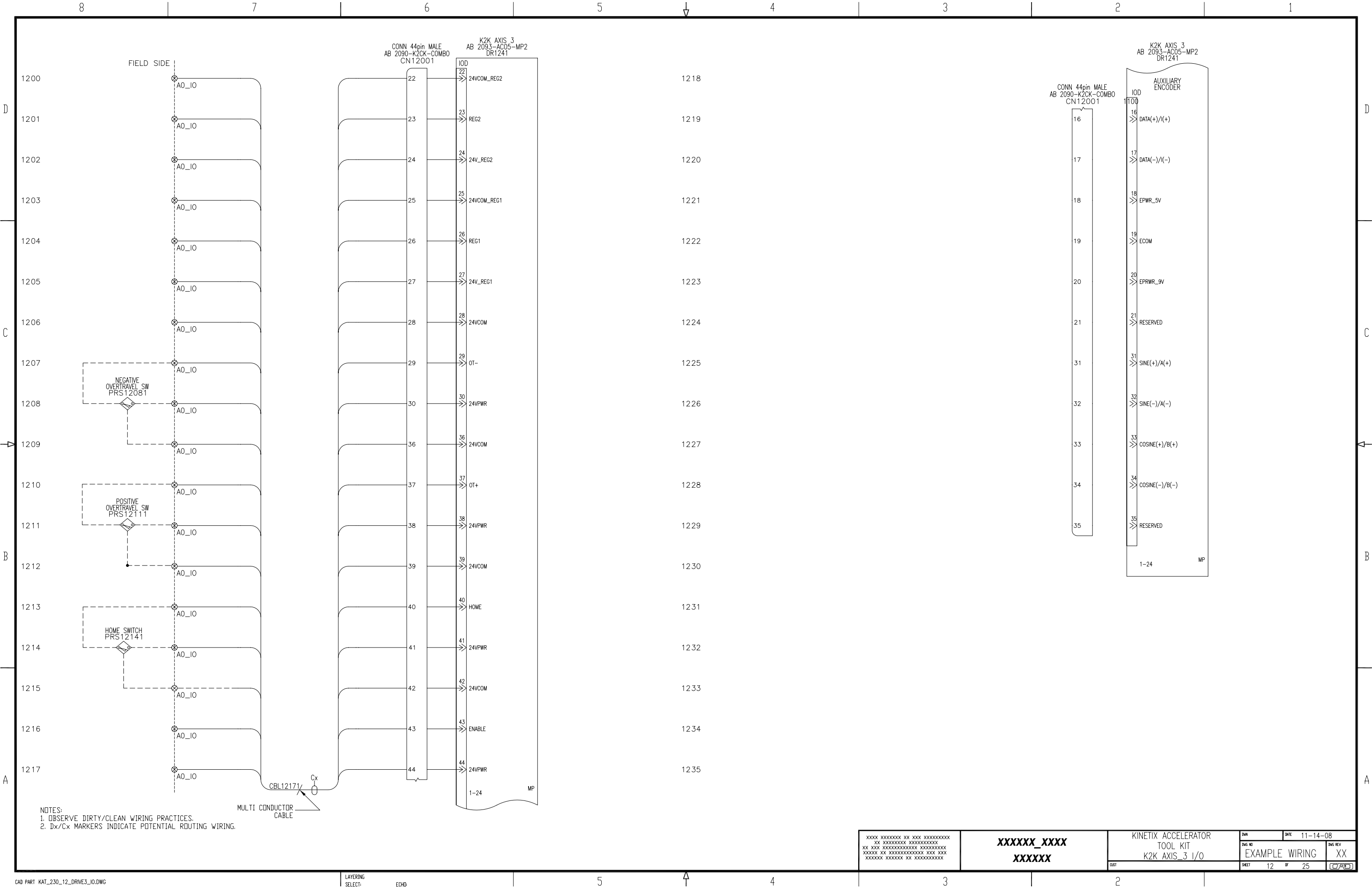
XXXX XXXXXXXX XX XXX XXXXXXXXXX XX XXXXXXXXXXXX XXXXXXXXXX XXXXXX XX XXXXXXXXXXXXXXXX XXX XXX XXXXXXXX XXXXXX XX XXXXXXXXXX		XXXXXX_XXXX XXXXXX	KINETIX ACCELERATOR TOOL KIT K6K AXIS_1 ENCODER		DWG NO EXAMPLE WIRING	DATE 11-14-08	DWG REV XX
CUST		SHEET 9		OF 25		CADD	

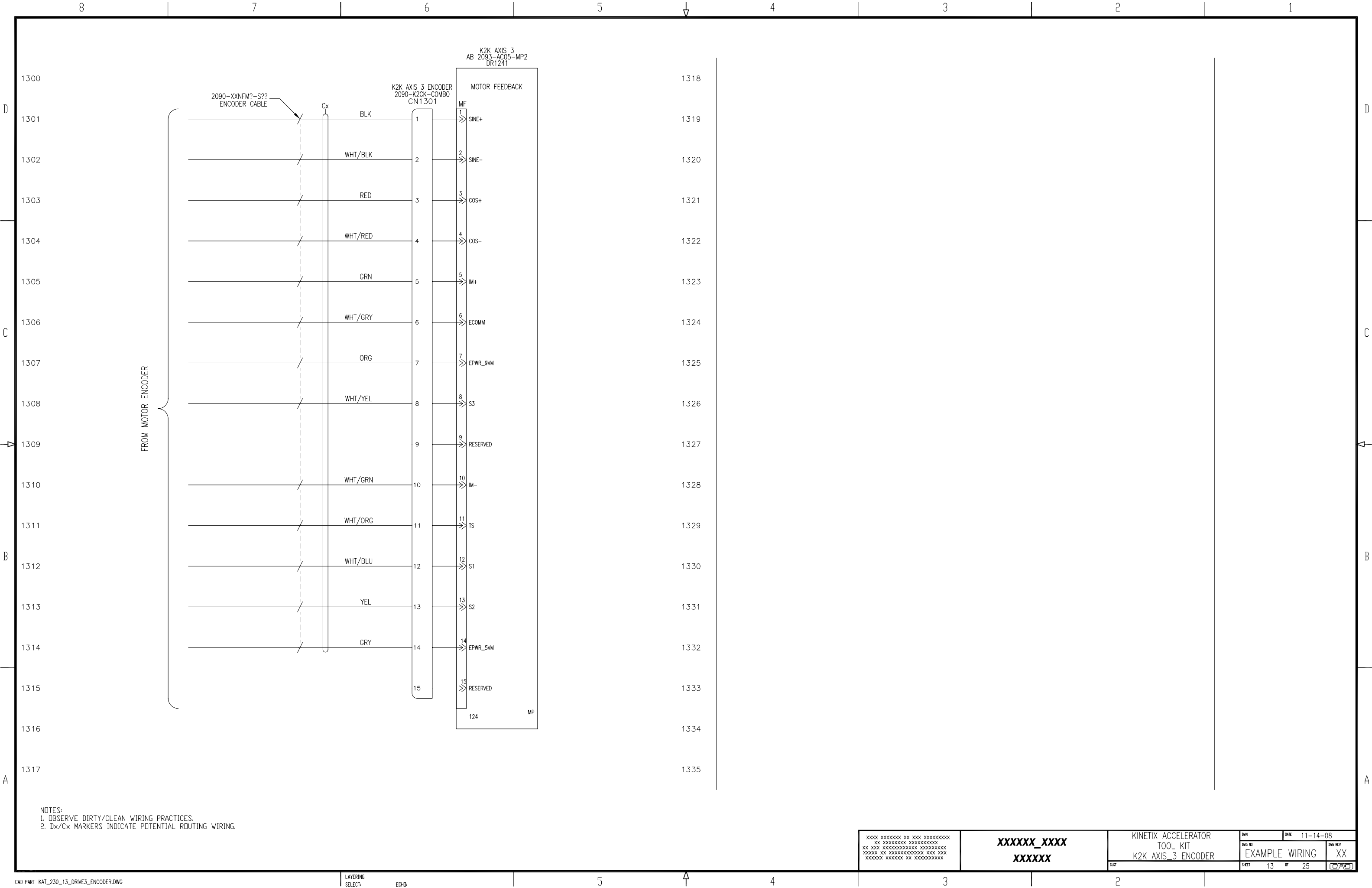


NOTES:
1. OBSERVE DIRTY/CLEAN WIRING PRACTICES.
2. Dx/Cx MARKERS INDICATE POTENTIAL ROUTING WIRING.

XXXX XXXXXXXX XX XXX XXXXXXXXXX XX XXXXXXXXXXXXXXXXXXXXXXXX XXXXXX XX XXXXXXXXXXXXXXXX XXX XXX XXXXXXXX XXXX XX XXXXXXXXXXXXXXXX		XXXXXX_XXXX XXXXXX	KINETIX ACCELERATOR TOOL KIT K6K AXIS 2 I/O		DWG NO EXAMPLE WIRING	DWG REV XX
CUST			DATE 11-14-08		SHEET 10	OF 25

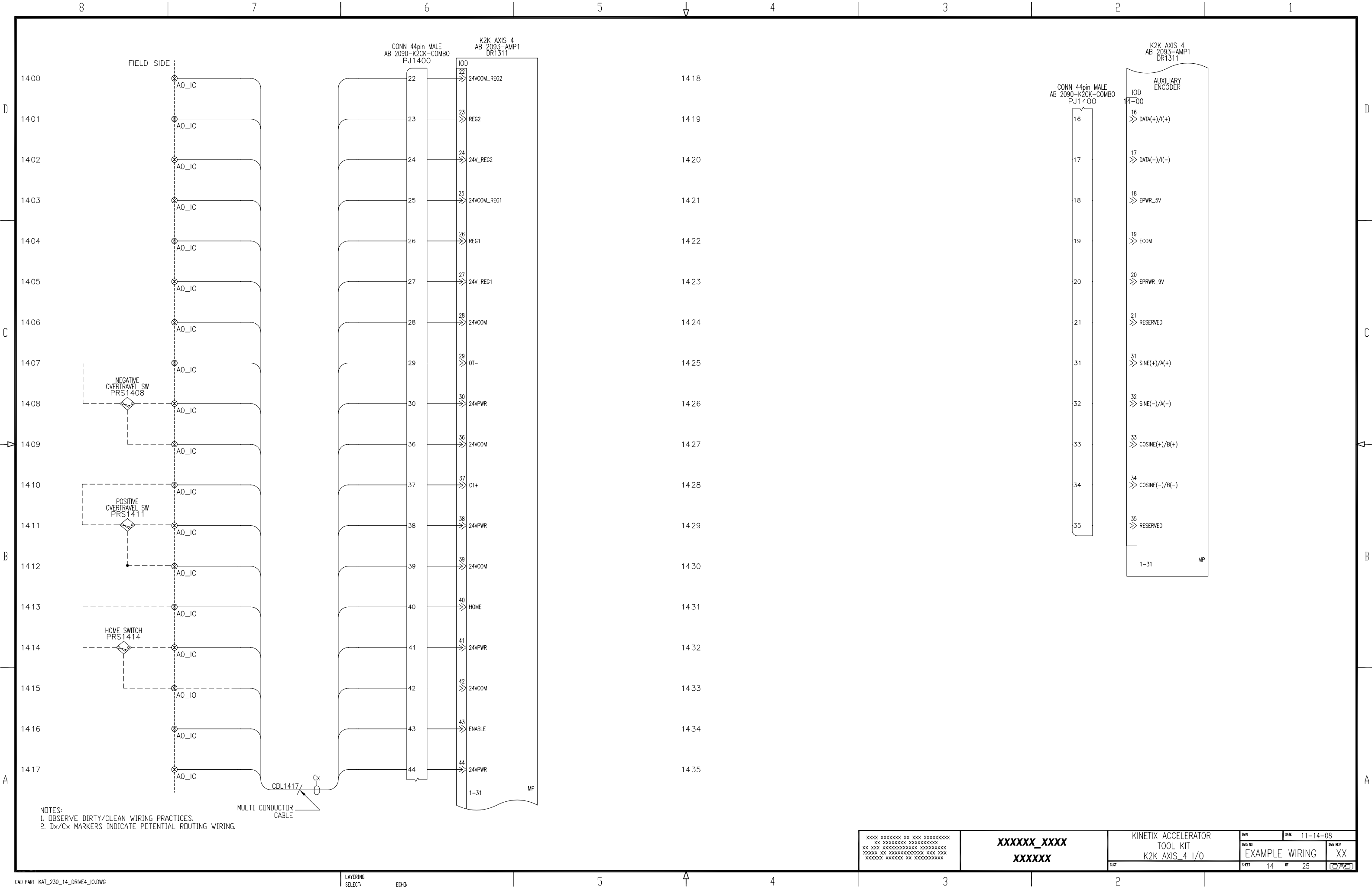


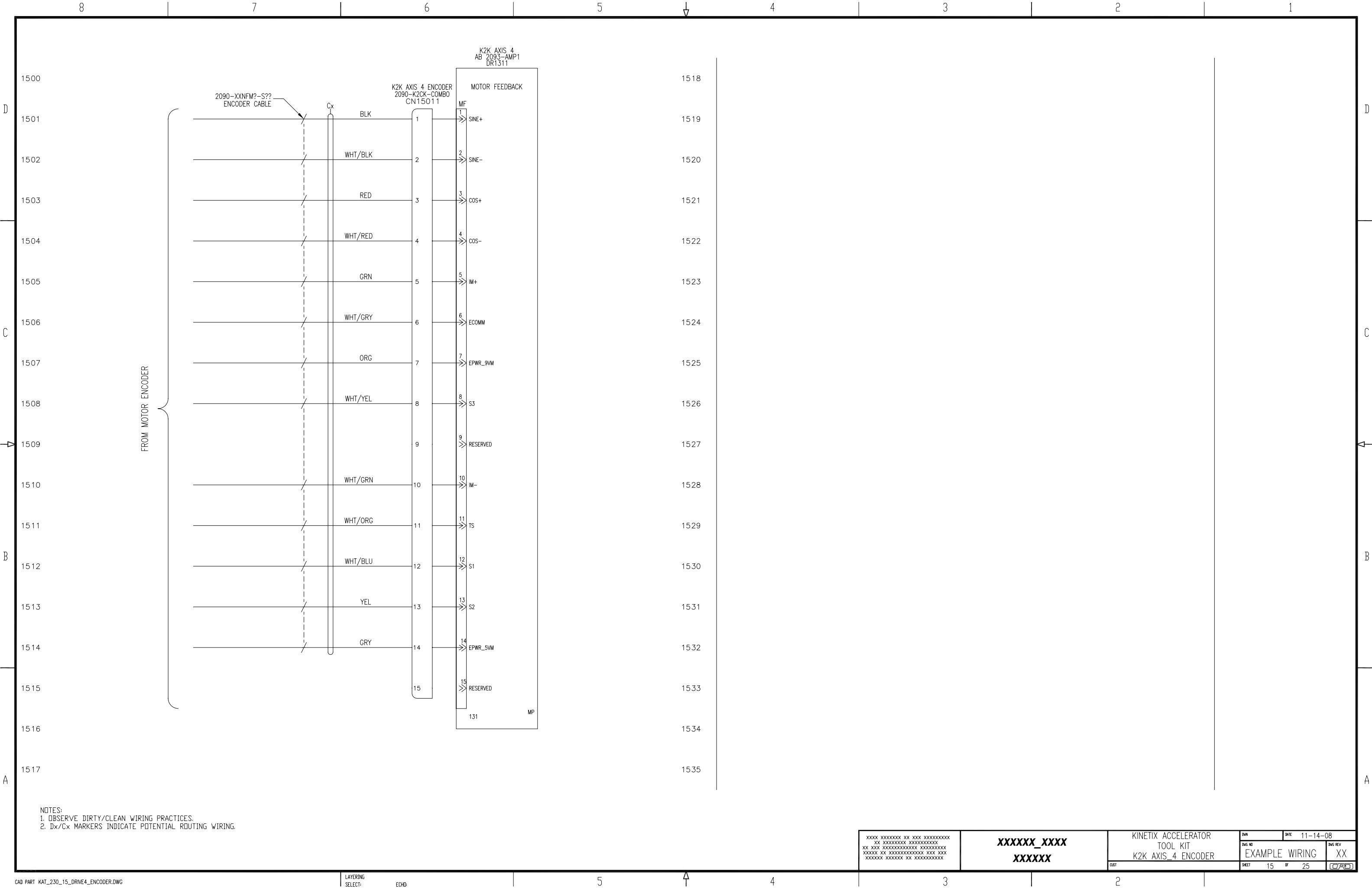




NOTES:
1. OBSERVE DIRTY/CLEAN WIRING PRACTICES.
2. Dx/Cx MARKERS INDICATE POTENTIAL ROUTING WIRING.

XXXX XXXXXXXX XX XXX XXXXXXXXXX XX XXXXXXXXXX XXXXXXXXXX XX XX XXXXXXXXXXXXXXX XXXXXXXX XXXXXX XX XXXXXXXXXXXXXXX XX XX XXXXXX XXXXXX XX XXXXXXXXXX		XXXXXX_XXXX XXXXXX		KINETIX ACCELERATOR TOOL KIT K2K AXIS_3 ENCODER		DWG NO EXAMPLE WIRING	DATE 11-14-08
CUST		SHEET 13 OF 25		DWG REV XX		C/A/D	





XXXX XXXXXXXX XX XXX XXXXXXXXXX
XX XXXXXXXXXX XXXXXXXXXX
XX XXX XXXXXXXXXX XXXXXXXXXX
XXXXXX XX XXXXXXXXXX XX XXX
XXXXXX XXXXXX XX XXXXXXXXXX

XXXXXX_XXXX
XXXXXX

KINETIX ACCELERATOR
TOOL KIT
K2K AXIS_4 ENCODER

DWG

DATE 11-14-08

DWG NO

EXAMPLE WIRING

DWG REV

XX

QST

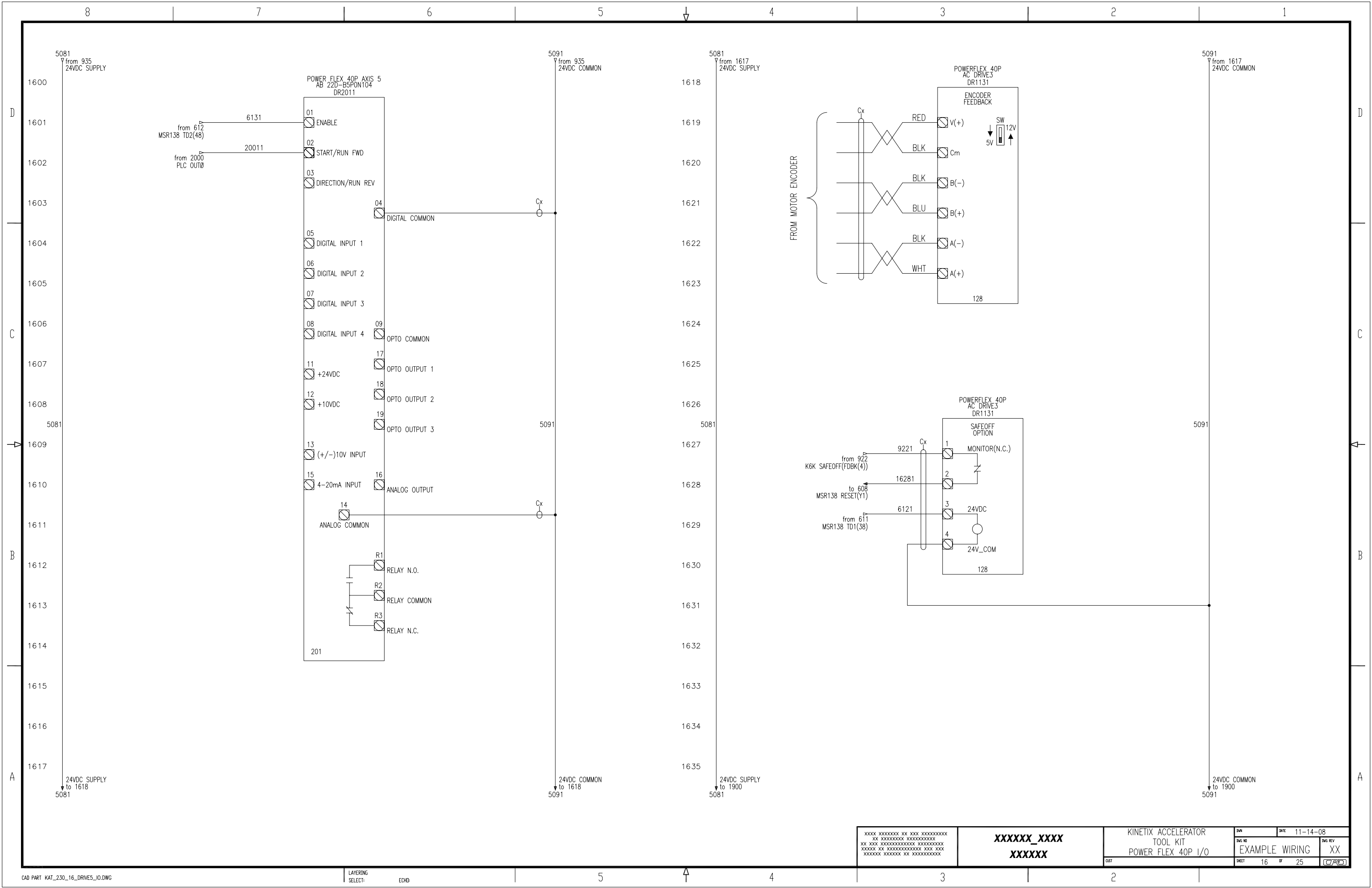
SHEET

15

OF

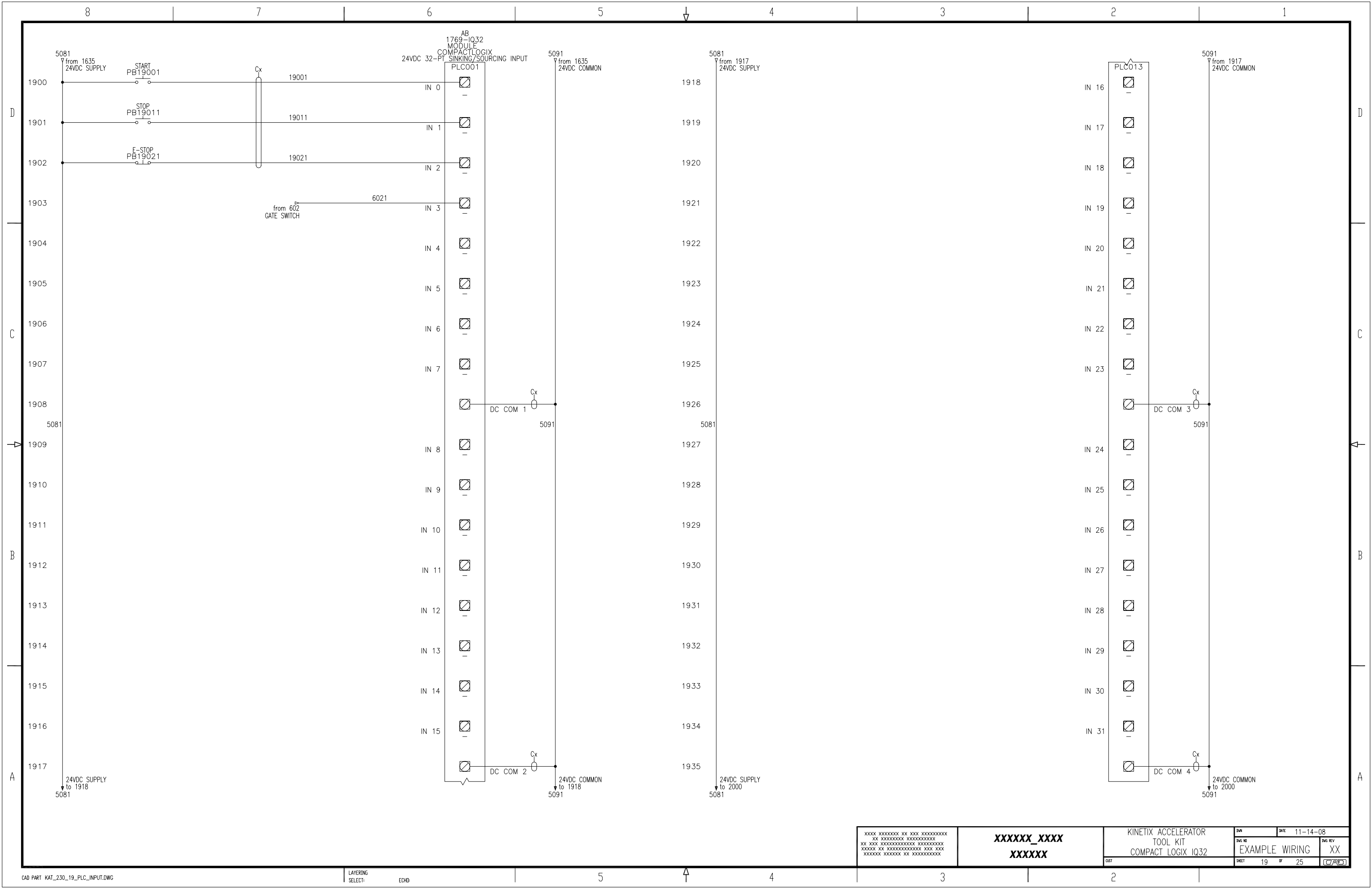
25

CRD









XXXX XXXXXXXX XX XXX XXXXXXXXXX
XX XXXXXXXXXXXX XXXXXXXXXXXX
XX XXX XXXXXXXXXXXX XXX XXX
XXXXXXXX XXXXXXXXXXXX XXX XXX
XXXXXXXX XXXXXX XX XXXXXXXXXXXX

XXXXXX_XXXX
XXXXXX

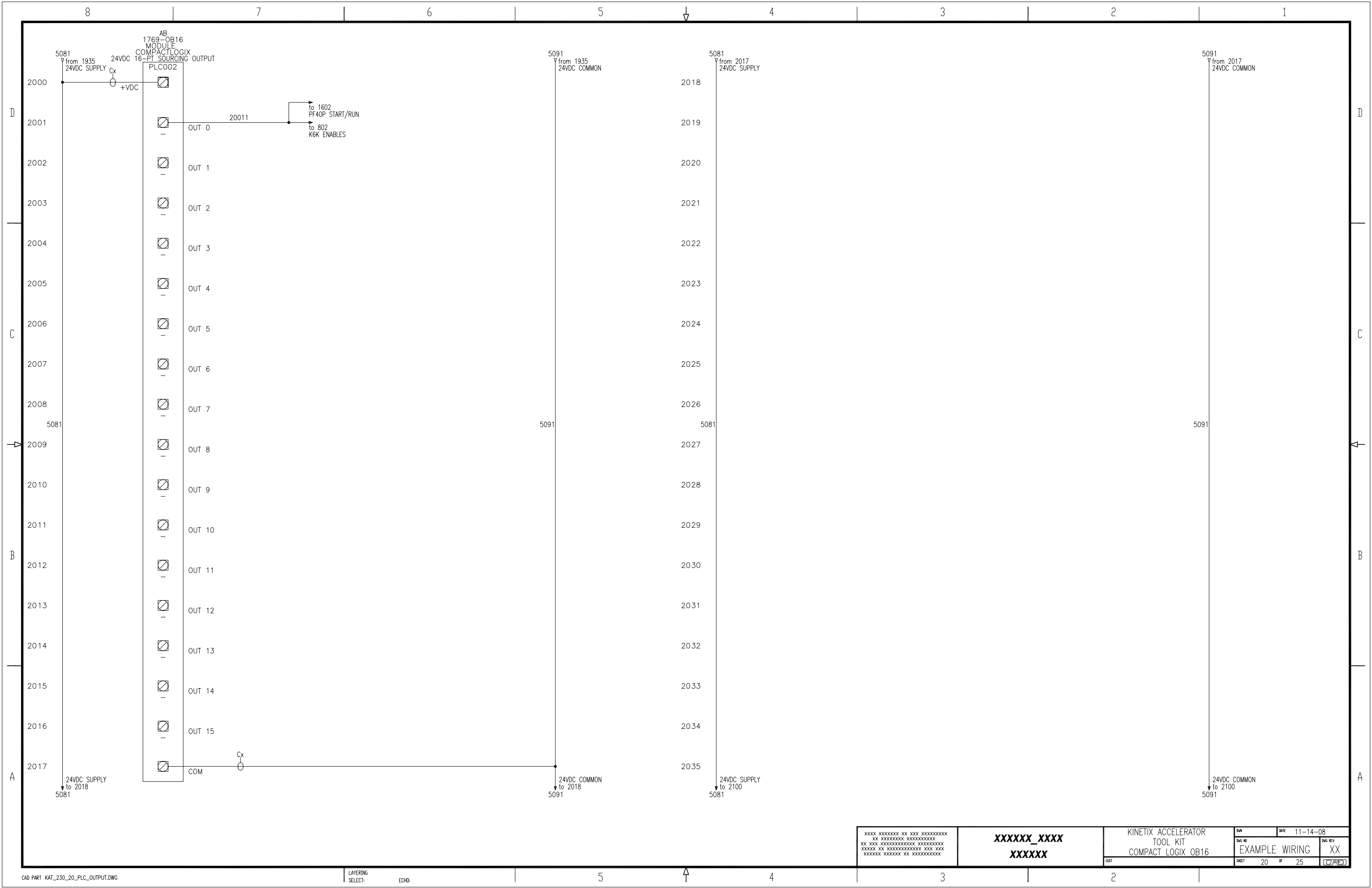
KINETIX ACCELERATOR
TOOL KIT
COMPACT LOGIX IQ32

DWG NO
EXAMPLE WIRING

DWG REV
XX

SHEET 19 OF 25

DATE 11-14-08



xxxx xxxxxxxx xx xxx xxxxxxxxxx
xx xxxxxxxxxx xxxxxxxxxx
xx xxx xxxxxxxxxx xxxxxxxxxx
xxxxxx xx xxxxxxxxxx xxx xxx
xxxxxx xxxxxx xx xxxxxxxxxx

XXXXXX_XXXX
XXXXXX

KINETIX ACCELERATOR
TOOL KIT
COMPACT LOGIX OB16

DWG

DATE 11-14-08

DWG NO

EXAMPLE WIRING

DWG REV
XX

DIST

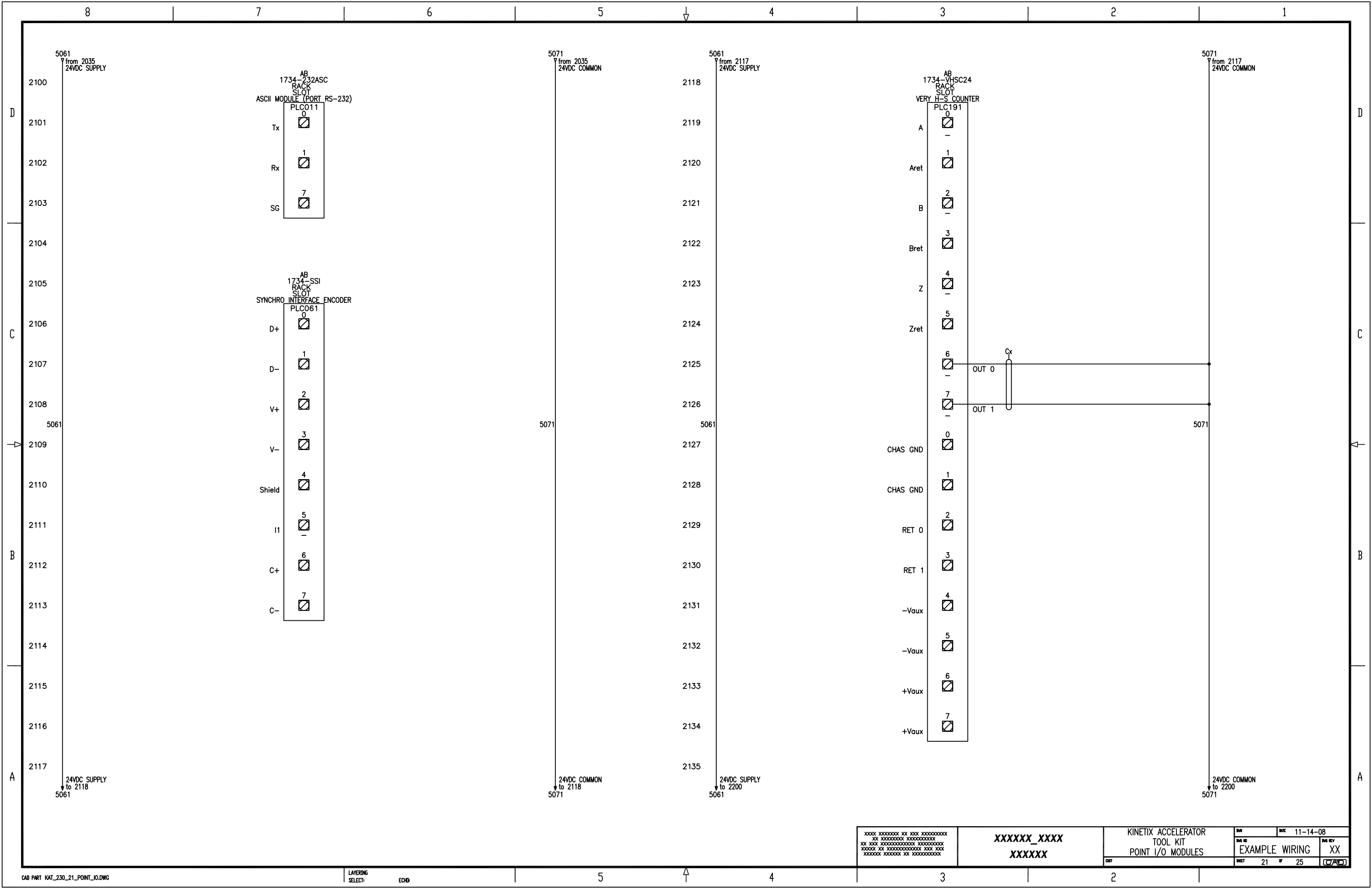
SHEET

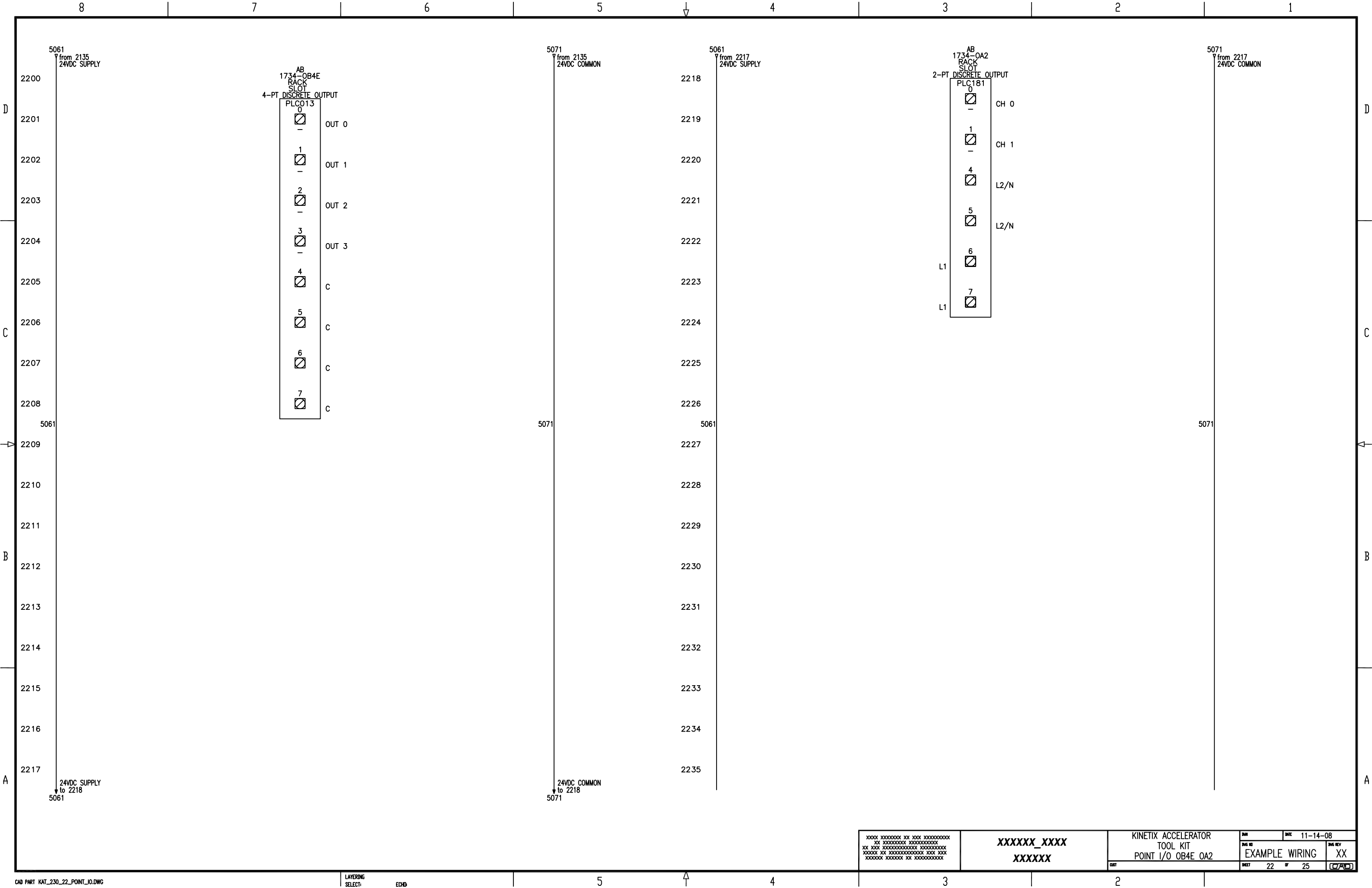
20

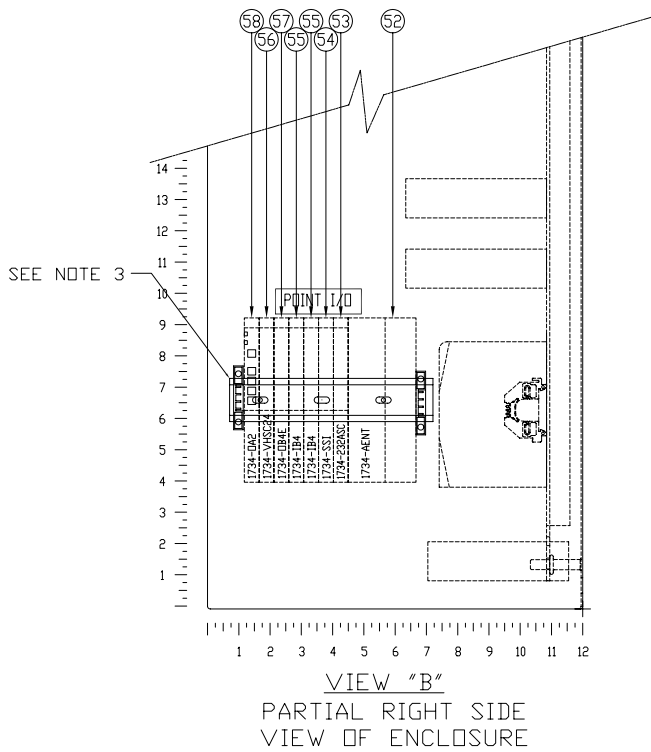
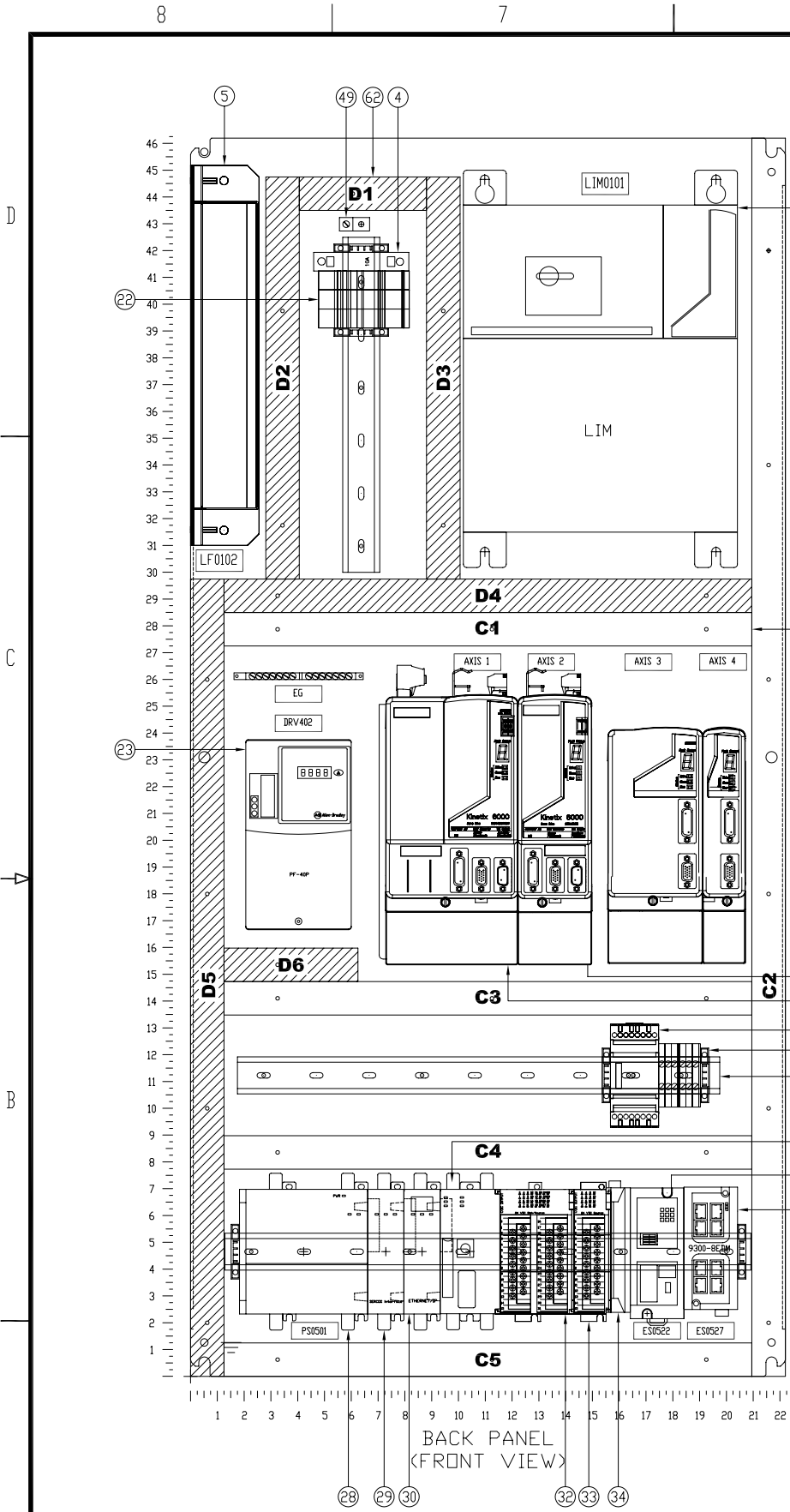
OF

25

CRD

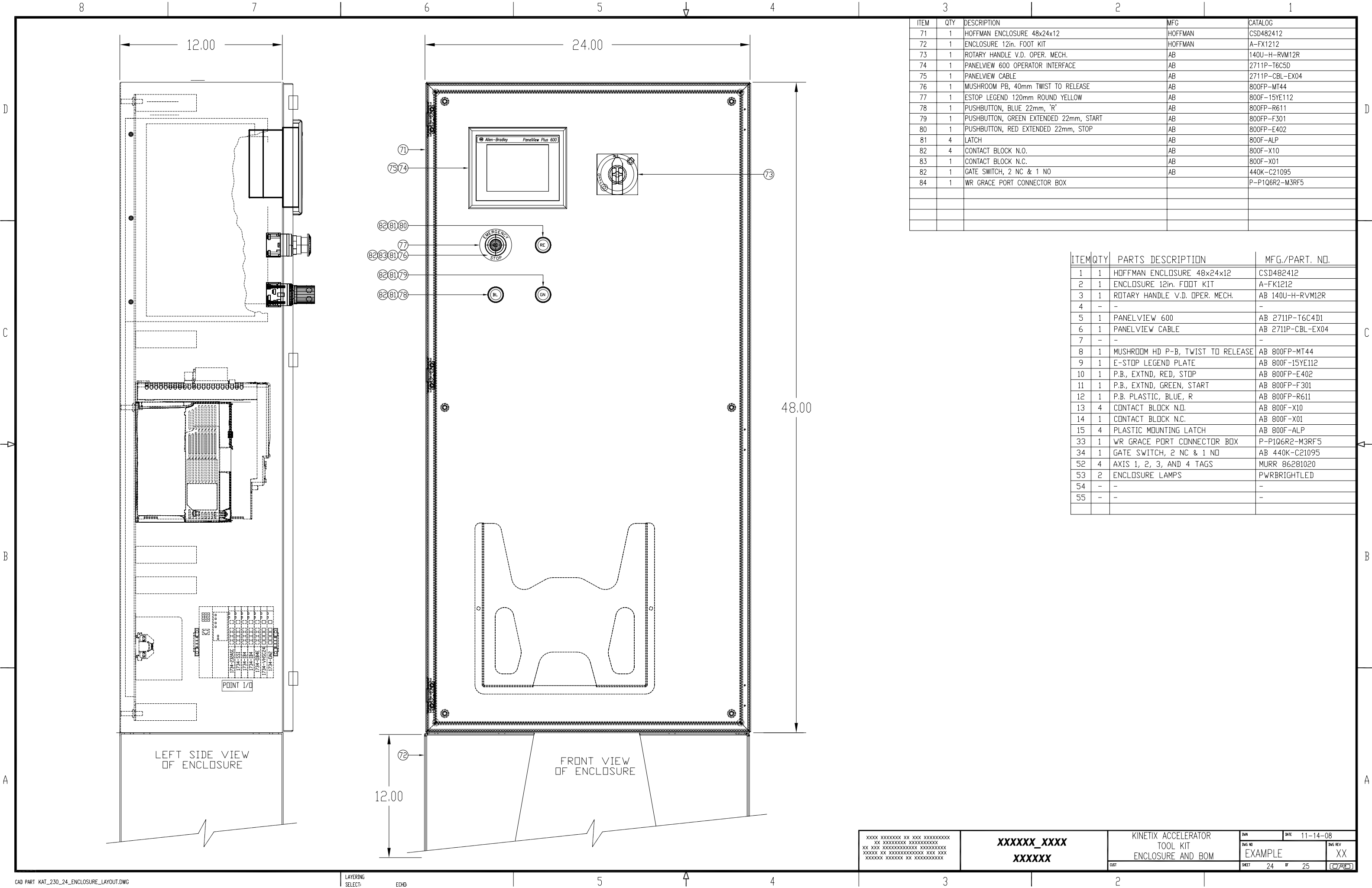






NOTES:
1. WIREWAYS CLEAN(WHITE)/DIRTY(GRAY) ARE MARKED AS Cx/Dx FOR SIGNAL/POWER
2. FOR FURTHER INFORMATION ON SYSTEM DESIGN FOR CONTROL OF ELECTRICAL NOISE SEE ROCKWELL PUBLICATION #GMC RM001_-EN-P

ITEM	QTY	DESCRIPTION	MFG	CATALOG
1	1	HOFFMAN BACK PANEL	HOFFMAN	CP4824
2	1	LINE FILTER	AB	2090-UXLF-HV330B
3	1	LINE INTERFACE MODULE	AB	2094-AL50S
4	1	CIRCUIT BREAKER, 1492-SP SERIES	AB	1492-SP1D100
5	1	MONITORED SAFETY RELAY, MSR138.1DP, 24V AC/DC	AB	440R-M23088
6	-	-	-	-
7	1	POWER RAIL, SLIM 230/460V, 4A K6K	AB	AB 2094-PRS2
8	1	DRV INTG. AXIS MOD (IAM) K6K AXIS1	AB	2094-AC09-M02-S
9	1	DRV AXIS MOD (AM) K6K AXIS2	AB	2094-AMP5-S
10	1	POWER RAIL, SLIM 230/460V, 4A K2K	AB	2093-PRS2
11	1	DRV INTG. AXIS MOD (IAM) K2K AXIS3	AB	2093-AC05-MP2
12	1	DRV AXIS MOD (AM) K2K AXIS4	AB	2093-AMP1
13	1	SAFE-OFF,WIRING HEADER	AB	2090-XNSM-W
14	1	SAFE-OFF,TERMINATING HEADER	AB	2090-XNSM-T
15	1	SERCOS FBR CABLE, 1M	AB	2090-SCEP1-0
16	2	SERCOS FBR CABLE, .1M	AB	2090-SCEP0-1
17	2	SERCOS FBR CABLE, 3M	AB	2090-SCEP3-0
18	2	LOW PROF. CON. KIT FOR K6K ENCODER	AB	2094-K6CK-D15M
19	2	LOW PROF. CON. KIT FOR K6K I/O	AB	2094-K6CK-D26M
20	2	LOW PROF. CON. KIT FOR K2K FDBCK	AB	2094-K2CK-D15M
21	1	CABLE,DRIVE TO DRIVE,SAFETY,7.9IN	AB	1202-C02
22	1	3POLE DIN MOUNT FUSE HOLDER 30AMP	AB	1492-FB3C30
23	1	POWERFLEX 40P	AB	22D-B5PON104
24	1	DRV GAURD SAFE-OFF OPT FOR 40P	AB	20A-DG01
25	1	PF40P ETHERNET/IP ADAPTER	AB	22-COMM-E
26	1	PF 40P FRAMEB COMM COVER	AB	20D-CCB
27	-	-	-	-
28	1	PWR SUPPLY 120/240 VAC INPUT	AB	1768-PA3
29	1	COMPACTLOGIX L4X SERCOS	AB	1768-M04SE
30	1	ETHERNET/IP BRIDGE MODULE	AB	1768-ENBT
31	1	COMPACTLOGIX L43 PROCESSOR	AB	1768-L43
32	1	24VDC INPUT MODULE 32 Pt.	AB	1769-IQ32
33	1	24 VDC OUTPUT MODULE 16 Pt.	AB	1769-OB16
34	1	END CAP	AB	1769-ECR
35	-	-	-	-
36	1	REMOTE ACCESS ETHERNET SWITCH	AB	9300-RADES
37	1	ETHERNET SWITCH	AB	9300-8EDM
38	1	PORT CONNECTOR BOX	WR GRACE	P-P1QR2-M3RF5
39	3	CABLE,ENET,PATCH,1M	AB	1585J-M8TBJM-1
40	2	CABLE,ENET,PATCH,3M	AB	1585J-M8TBJM-3
41	-	-	-	-
42	8	END CLAMPS	AB	1492-EAJ35
43	6	DIN MOUNT TERMINAL BLOCKS	AB	1492-W4
44	2	TERMINAL BLOCK END PLATE	AB	1492-EBJ3
45	3	DIN RAIL	AB	199-DR1
46	-	-	-	-
47	-	-	-	-
48	1	GROUNDING BAR	GE	TGL-2
49	1	LOCKTIGHT GROUNDING LUG #8-#4 AWG		31003
50	1	STRAP FOR RELAY 440R-M23088	HTC	HTC-P0050-01
51	7	POINT I/O, MOUNTING BASE, 8 TERM.	AB	1734-TB
52	1	POINT I/O, ENET ADAPTER	AB	1734-AENT
53	1	POINT I/O, RS232 INTERFACEPOINT I/O, ENET ADAPTER	AB	1734-232ASC
54	1	POINT I/O SYN. SERIAL INTERFACE	AB	1734-SSI
55	2	POINT I/O 4 INPUT SINKING	AB	1734-IB4
56	1	POINT I/O, VERY HIGH SPD COUNTER	AB	1734-VHCS24
57	1	POINT I/O, 4 PT, OUTPUT MODULE	AB	1734-OB4E
58	1	POINT I/O, 2 PT, OUTPUT MODULE	AB	1734-OA2
59	-	-	-	-
60	6	WIREWAY 1x4" WHITE ~8ft.	PANDUIT	NE1X4WH6
61	6	WIREWAY COVER 1" WHITE ~8ft.	PANDUIT	
62	7	1" X 4" WIREWAY	PANDUIT	F1X4LG6
63	1	WIREWAY COVER 1" GREY ~10ft.	PANDUIT	
64	1	CORD S03 #14AWG 16ft.		



ITEM	QTY	DESCRIPTION	MFG	CATALOG
71	1	HOFFMAN ENCLOSURE 48x24x12	HOFFMAN	CSD482412
72	1	ENCLOSURE 12in. FOOT KIT	HOFFMAN	A-FX1212
73	1	ROTARY HANDLE V.D. OPER. MECH.	AB	140U-H-RVM12R
74	1	PANELVIEW 600 OPERATOR INTERFACE	AB	2711P-T6C5D
75	1	PANELVIEW CABLE	AB	2711P-CBL-EX04
76	1	MUSHROOM PB, 40mm TWIST TO RELEASE	AB	800FP-MT44
77	1	ESTOP LEGEND 120mm ROUND YELLOW	AB	800F-15YE112
78	1	PUSHBUTTON, BLUE 22mm, 'R'	AB	800FP-R611
79	1	PUSHBUTTON, GREEN EXTENDED 22mm, START	AB	800FP-F301
80	1	PUSHBUTTON, RED EXTENDED 22mm, STOP	AB	800FP-E402
81	4	LATCH	AB	800F-ALP
82	4	CONTACT BLOCK N.O.	AB	800F-X10
83	1	CONTACT BLOCK N.C.	AB	800F-X01
82	1	GATE SWITCH, 2 NC & 1 NO	AB	440K-C21095
84	1	WR GRACE PORT CONNECTOR BOX		P-P1Q6R2-M3RF5

ITEM	QTY	PARTS DESCRIPTION	MFG./PART. NO.
1	1	HOFFMAN ENCLOSURE 48x24x12	CSD482412
2	1	ENCLOSURE 12in. FOOT KIT	A-FK1212
3	1	ROTARY HANDLE V.D. OPER. MECH.	AB 140U-H-RVM12R
4	-	-	-
5	1	PANELVIEW 600	AB 2711P-T6C4D1
6	1	PANELVIEW CABLE	AB 2711P-CBL-EX04
7	-	-	-
8	1	MUSHROOM HD P-B, TWIST TO RELEASE	AB 800FP-MT44
9	1	E-STOP LEGEND PLATE	AB 800F-15YE112
10	1	P.B., EXTND, RED, STOP	AB 800FP-E402
11	1	P.B., EXTND, GREEN, START	AB 800FP-F301
12	1	P.B. PLASTIC, BLUE, R	AB 800FP-R611
13	4	CONTACT BLOCK N.O.	AB 800F-X10
14	1	CONTACT BLOCK N.C.	AB 800F-X01
15	4	PLASTIC MOUNTING LATCH	AB 800F-ALP
33	1	WR GRACE PORT CONNECTOR BOX	P-P1Q6R2-M3RF5
34	1	GATE SWITCH, 2 NC & 1 NO	AB 440K-C21095
52	4	AXIS 1, 2, 3, AND 4 TAGS	MURR 86281020
53	2	ENCLOSURE LAMPS	PWRBRIGHTLED
54	-	-	-
55	-	-	-

